

# NOR GOLIATH

DP3 Construction /Heavy Lift & Dive/ROV Support Vessel



Contact: Cleve Ammons  
Phone: 985-630-0476  
cleve.ammons@sapuraenergy.com



Contact: Jack Lounsbury  
Phone: 713-206-9737  
jlounsbury@aqueossubsea.com



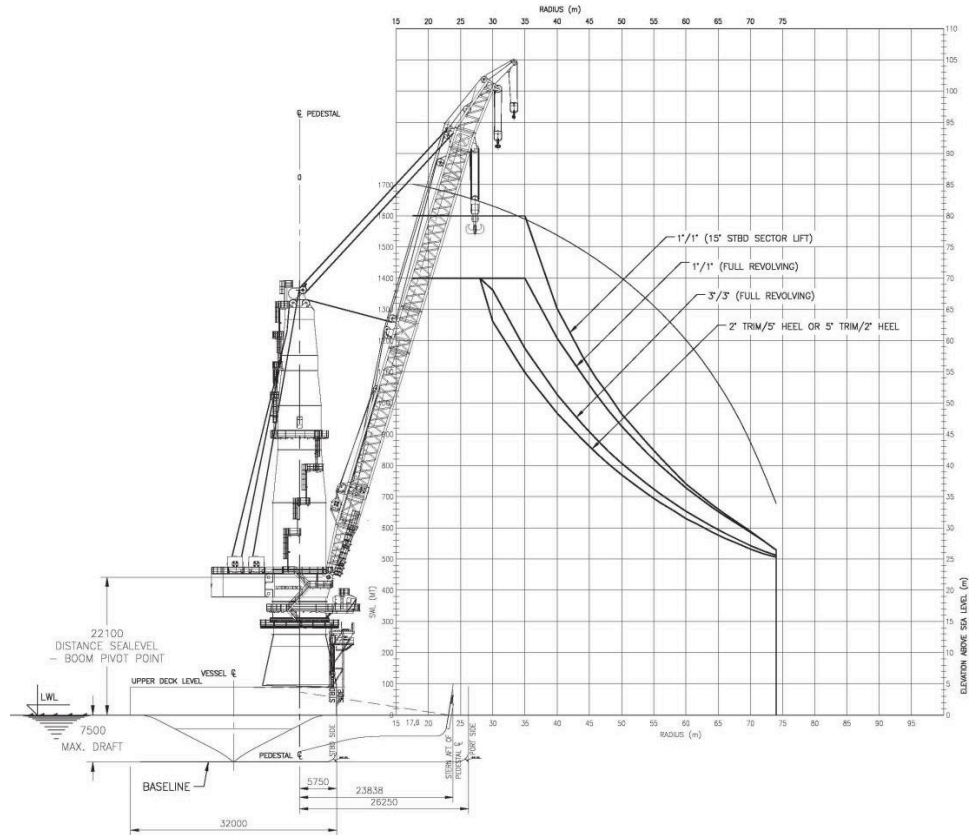
Contact: Jeremiah Hebert  
Phone: 281-881-2782  
jhebert@helixesg.com

# NOR GOLIATH

Aqueos has teamed up with Sapura Energy to provide the *Nor Goliath*. This vessel is ABS classed and mobilized with the Aqueos Modular Saturation Diving System, Aqueos Surface Diving System, and a 200 hp Triton XLX Work Class ROV System provided by Helix Robotics Solutions.

*Nor Goliath* is ideally suited for subsea construction, IRM and abandonment activities utilizing surface air diving operations to 165 feet, saturation diving operations to 1,000 feet and ROV operations to 10,000 feet.

Comfortable berths allow the boat to accommodate 296 persons.



**The NOR GOLIATH is a DP3 subsea construction vessel utilized for heavy lift, saturation diving and ROV operations.**



# NOR GOLIATH TECHNICAL SPECIFICATION

Main characteristics	
Class	ABS + A1+ (E) + AMS + ACCU + ICE CO + DP3 HELIDECK + ES + FiFi 2
Vessel Type	Construction/Heavy Lift
Shipbuilder	Drydocks World Pertamina Indonesia
Accommodations	296 people
Flag	Marshall Islands
Built	2009

Vessel dimensions	
Length	590.6 ft.
Width	105 ft.
Draft (design/max)	24.6 ft.
Draft (mean)	21.3 ft.
Draft (max with retractable thrusters extended)	38.0 ft.
Gross Tonnage	25,812
Net Tonnage	7,743

Cargo & deck space	
Flush Deck Cargo Space:	4,200 m <sup>2</sup>
Deck Loading:	10 mt/m <sup>2</sup> and 5 mt/m <sup>2</sup>

Thrusters	
Thrusters (Aft)	3 Azimuth thrusters, each of 3,333 kW
Thrusters (Fwd)	2 x 2,400 kW Azimuth retractable thrusters plus 2 x tunnel thrusters, each of 1,355
Total Thrusters	17,509 kW

Main crane	
Make	Liebherr
Model	MTC 78000-1400 (1600) Litronic
Main Hook Capacity	1,600 mt/80 m hook height

Auxiliary cranes	
Make	2 x Liebherr
Main Hook Capacity	70 mt/53 m hook height

Aqueous IMCA saturation diving system	
DNV Class Certified and in compliance with IMO and SOLAS standards	
20' Habitat Life Support Module including emergency (secondary) electrical distribution system	
3-Man IMCA Compliant Diving Bell	
2 x Dual Lock 6-man Living Habitat	
Hyperbaric Rescue Chamber (HRC) designed for 12 divers installed on a self-contained hydraulic accumulator tilt davit launching system in compliance with SOLAS rules for launching of evacuation systems	
20' Diving & Life Support Module	
DNV Designed Bell Handling System	
DNV Designed Fibron DMU 131 Sheathed Main Bell Umbilical Winch	
20' x 8' Workshop/Stores module	

Aqueous IMCA air div system (ADS-01)	
Air or Nitrox diving capabilities	
1 - 8' x 20' Containerized dive control with decompression chamber	
1 - 8' x 10' Compressor van with two electric 370 cfm Quincy air compressors	
1 - 8' x 10' Tool/work container	
2 x Diver launch and recover (LARS) with onboard hydraulics	
2 x two diver stages with onboard gas supply	

Helideck	
75.5 ft. diameter designed for Sikorsky S61N.	

Speed, consumption & endurance	
General Service Speed	12 kts - 90% MCR
Consumption in Transit	39 mt/day
Consumption on DP	15 mt/day
Consumption alongside	5 mt/day
Endurance	80 days offshore

DP system	
Kongsberg K-Pos dual redundant main operating station on aft bridge, simplex back-up operating station on forward bridge	
2 x HiPAP acoustic position reference system with 2 x 500 mm transducers	
3 x Differential GPS position reference systems	
2 x Bandak Mk 15B taut wire position reference systems	
2 x Fanbeam short-range laser position reference systems	

Remotely Operated Vehicle (ROV)	
The Triton XLX ROV system sets the standard for work-class ROVs in the industry. Exceptional durability, endurance and operational flexibility are the trademarks of this system. The 200 HP Triton XLX ROV offers a comprehensive combination of thrust, payload, throughframe lift and sensor interface. It supports virtually any offshore heavy-work requirement.	
Type	Triton XLX 200 hp work-class ROV system
	Rated to 3,000 m (9,840 ft)
	250-300 Kg (550-662 lb) payload
	3,000 Kg (6,614 lb) through frame lift capacity
ROV vehicle dimensions	Length 3.22 m (10 ft, 5 in)
	Width 1.80 m (5 ft, 2 in)
	Height 2.1 m (6 ft, 6 in)
	Weight in Air 4,900 Kg (10,800 lb)

- The Triton XLX ROV offers a compact combination of thrust, payload, high through-frame lift, and sensor interface to support most offshore work requirements, including, but not limited to:
- Drill support
  - Construction support
  - Platform cleaning and inspection
  - Subsea cable burial and maintenance
  - Remote tool deployment
  - Subsea pipeline completion
  - Suction pile Installation

